

Services offered from our Europe Office:

Site evaluation services

Detailed location data

Assistance with site visits

Serving as your advocate  
with all involved agencies

Incentive and training inducements

Assistance obtaining  
required permits and licenses

Please contact us as your link  
to doing business in the U.S.



European Representative Office  
Poststrasse 14-16  
20354 Hamburg, Germany

Office Phone: +49 (0)40 35004440  
[CED.ky.gov/European](http://CED.ky.gov/European)

# Kentucky

A destination for European businesses





# Welcome to Kentucky

## your new American home

Combine a perfect location in the United States with a strong workforce, overnight delivery virtually anywhere in the world, and an abundance of opportunities for growth and profit, and you can see why Kentucky can be your ideal U.S. location.

Kentucky is located at the center of a 34-state distribution area in the Eastern U.S. Its borders are within 1000 km of more than 65 percent of the U.S population, personal income and manufacturing establishments.



Kentucky is within one day's drive or a two hour flight from two-thirds of the U.S. population.

# Kentucky makes

## what the world wants

Manufacturing is a dominant force in Kentucky. Consider the facts:

- More than 4,500 manufacturing facilities operate in Kentucky, and companies from around the globe recognize the Bluegrass State as a premier location and partner for business
- More than 500 companies are internationally owned, employing nearly 112,000 people
- European-owned companies comprise 43 percent of all international companies in Kentucky
- Kentucky-made products are shipped to more than 200 countries worldwide

# Kentucky's

## primary industry sectors

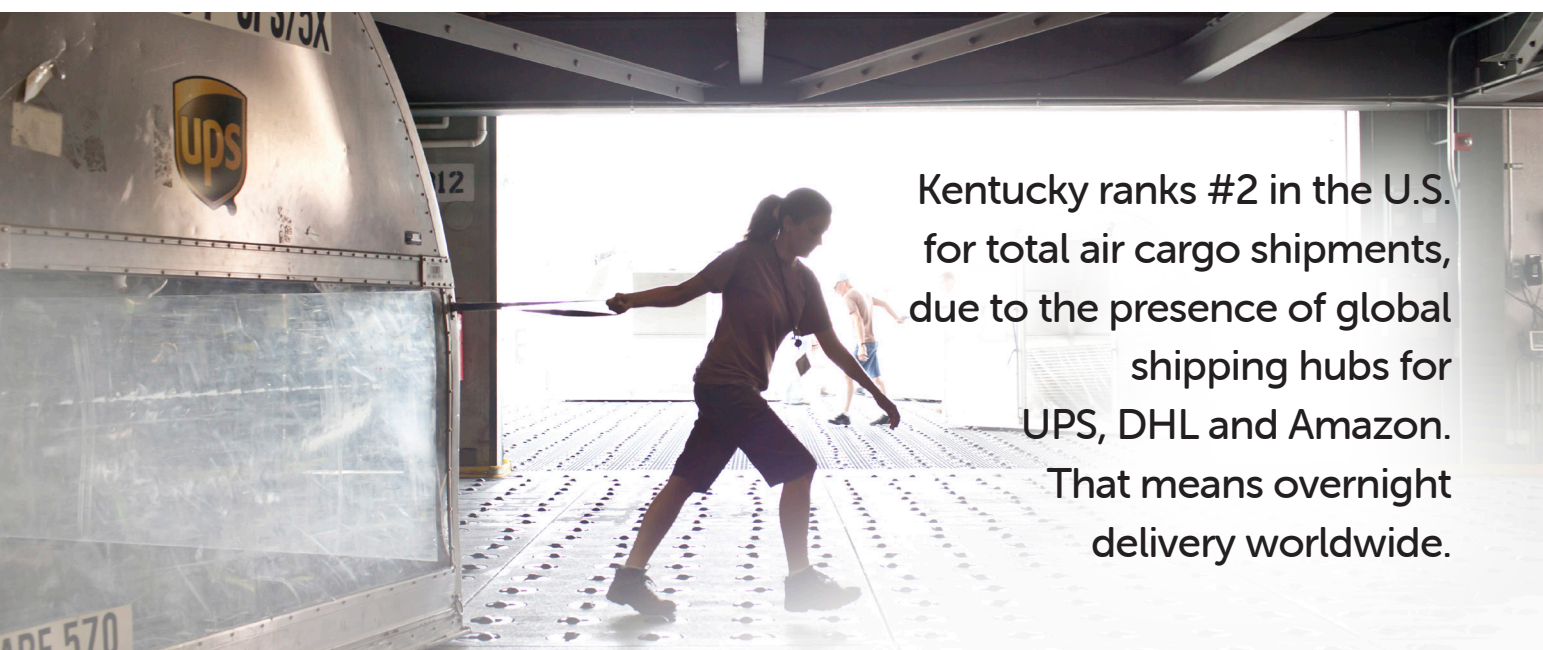
- Automotive
- Primary Metals
- Distribution and Logistics
- Food and Beverage
- Chemicals
- Aerospace
- Plastics and Rubber
- Biotech

# Kentucky workers

## are trained for global quality

Kentucky's workforce is well trained and qualified. Here are some examples of our global competitiveness:

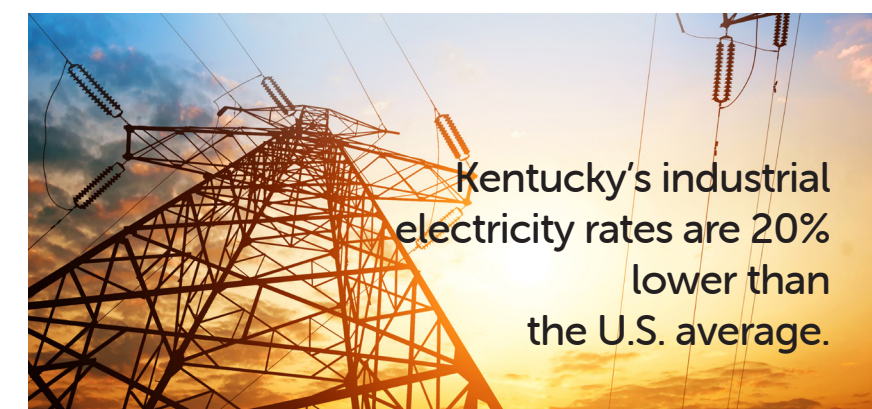
- Kentucky's workforce training programs are adapting best practices from Europe.
- Kentucky's Registered Apprenticeship programs custom-train employees to meet the specific needs of an industry and build a robust talent pipeline.
- KY FAME, a work training program based on the German Skills Initiative, combines education with on-the-job training to create the future workforce.



Kentucky ranks #2 in the U.S. for total air cargo shipments, due to the presence of global shipping hubs for UPS, DHL and Amazon. That means overnight delivery worldwide.



GLOBALY CONNECTED



Kentucky's industrial electricity rates are 20% lower than the U.S. average.

